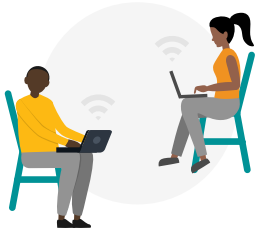


Internet Speeds to Meet Your Needs




How to choose a plan that is right for your household.

1. How many people will use the internet?

When more people share the same connection, a faster plan is needed to accommodate their devices.



Plans for households with
limited internet use



 HOW MANY PEOPLE IN HOUSEHOLD	 DOWNLOAD SPEEDS	 UPLOAD SPEEDS
1-2	50 Mbps	5 Mbps
2-4	100 Mbps	10 Mbps
4-6	200 Mbps	10 Mbps
6+	300 Mbps	15 Mbps



If your connection speed is too slow, you'll see buffering.



Plans for households who need
higher download speeds

 DOWNLOAD SPEEDS	 UPLOAD SPEEDS
100 Mbps	10 Mbps
200 Mbps	15 Mbps
500 Mbps	20 Mbps
1000 Mbps	30 Mbps

2. How will you be using the internet?

Downloading is when the internet shares information with your computer. You'll need higher download speeds when watching Netflix and online gaming, than if you only **surf the web, use social media, and do online shopping.**

More day-to-day activities also require the fastest upload speeds (when our computers share information with the internet) e.g. **Zoom and video/audio calls, online gaming and sharing photos on social media.**